

Tinytag Explorer Software

SWCD-0040

Issue 5
17th October 2014
E&OE

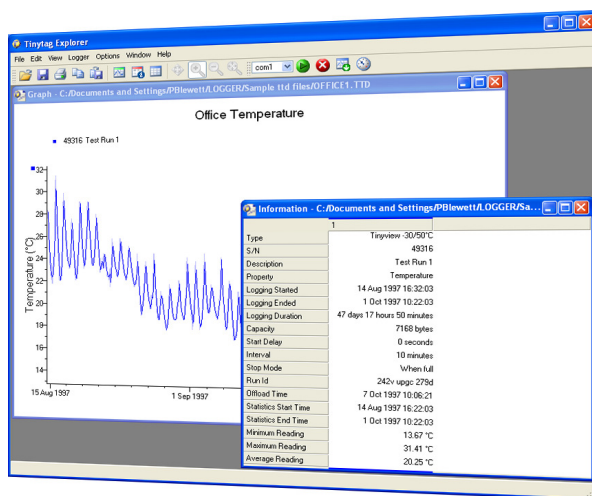
Tinytag Explorer is the principal software for operating Tinytag data loggers. This Windows based program is simple and intuitive to use, allowing users to easily manage both Tinytag loggers and recorded data.

A simple to use launch page that allows easy editing of a data logger's settings, whilst at the same time summarising them clearly.

When offloaded, recorded data is initially presented as a graph but can also be displayed as a table of readings if required. These views are supplemented with an information view, that summaries details of the data being shown, and a daily minimum/maximum view. The software also includes a dew point tool for temperature and relative humidity data loggers.

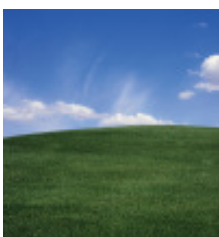
Data can easily be exported from all four views into programs such as MS Excel and Word, either as a file or by simply copying and pasting.

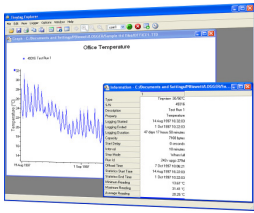
The software supports multiple languages, and there is also a comprehensive, illustrated help file to take the user through the basics of the software, and its more advanced features.



Features

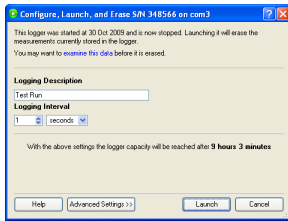
- Simple launch interface
- Linked graph, readings and information views
- Daily minimum/maximum view
- Overlay feature to combine traces onto the same graph
- Simple copy and paste export
- .xls, .xml, .txt and .csv export formats
- Dew Point Tool
- Top and tail feature for masking unwanted data
- Bulk Offload Tool
- Site licence that allows multiple installs
- Multiple language support
- Comprehensive, illustrated help file





Basic Features

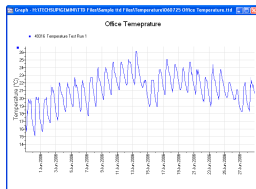
Simple Launch Interface



Tinytag Explorer's launch page summarises data logger settings, allowing users to see at a glance how their unit is configured. Settings are easily edited by expanding the appropriate menu option.

Linked Data Views

Tinytag Explorer has four linked information views, for showing recorded information graphically or in a table, and for giving the user summary information from a logging run, and daily minimum and maximum values.



Graphical View

Readings View

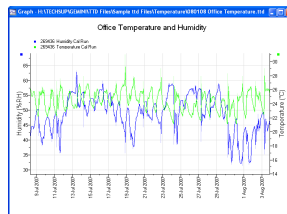
Information View

Daily Min/Max Readings

All of the above views are linked, so changing the range on the graph view will automatically update the other views.

Graph Overlay

Tinytag Explorer allows the user to easily combine data from multiple logging runs into the same graph. Additionally, users can scale axis, change line colours and add notes to the graph view.



Exporting Data

Recorded data can be exported from Tinytag Explorer simply by copying and pasting, or by saving files in .xls, .xml, .txt or .csv formats.

Basic Features (continued...)

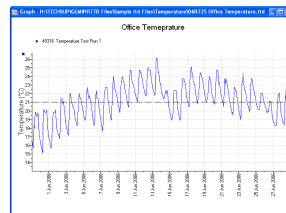
Current Reading

Check the status of your data logger using the Current Reading feature.



Advanced Features

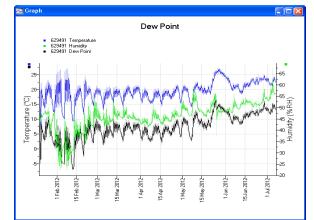
Setpoints



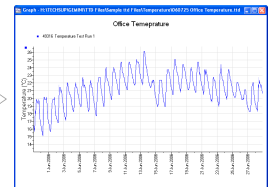
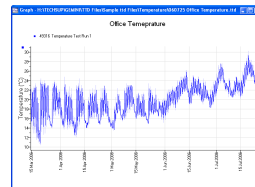
The Setpoint tool allows users to plot lines on their graphs at values that are relevant to their application. These Setpoints are linked to the software's Information view, where cumulative time above and below the Setpoint value are listed.

Dew Point Tool

When temperature and relative humidity data loggers are downloaded, the software can be set to automatically generate a dew point trace.

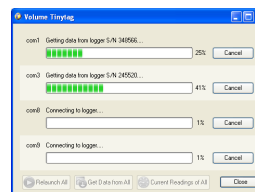


Top and Tail



This feature allows users to quickly and easily mask unwanted data from the start and end of their logging runs. Simply zoom in on the area of data required, right click and select Top and Tail and the unwanted data will be hidden from view.

Bulk Offload Tool

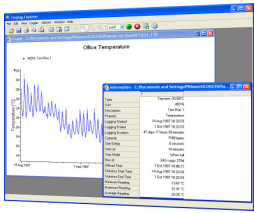


Tinytag Explorer is supplied with a Bulk Offload Tool which enables users to offload and restart* multiple data loggers at the same time.

*Data loggers that have previously been configured using Tinytag Explorer are restarted with the same launch settings, but with any trigger or delay starts disabled.

Continued...

data sheet



Advanced Features (continued...)

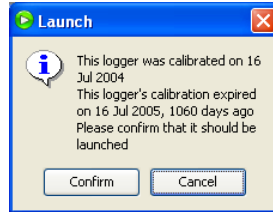
• Mean Kinetic Temperature

Tinytag Explorer can also display the Mean Kinetic Temperature over the duration of a logging run.

Minimum Reading	15.1 °C
Maximum Reading	26.1 °C
Average Reading	21.2 °C
Mean Kinetic Temperature	21.4 °C

• Calibration Reminder

Tinytag Explorer can be set to inform a user when the calibration of their data loggers needs to be checked. The tool can be set to any time interval, and it can also be set to warn a user if a data logger hasn't been calibrated.



General Features

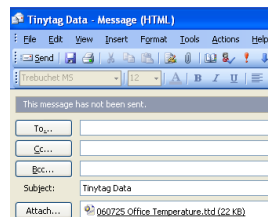
• Multi-Language Support

Tinytag Explorer supports the following languages:

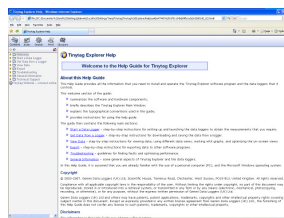
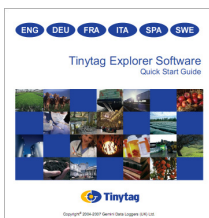
- English 
- Chinese 
- French 
- German 
- Italian 
- Korean 
- Spanish 
- Swedish 

• Send To

A Send To feature allows users to easily share data with colleagues.



• Quick Start Guide and Help File



Tinytag Explorer is supplied with a Quick Start Guide that covers the installation and set up of the software, and the basics on how to start a logger and view the recorded data.

For more in depth information, the software also has a comprehensive and fully illustrated Help file.

System Requirements

Tinytag Explorer requires a PC with the following specification:

- Operating System:** Windows Vista, 7, 8 or 8.1 (x86 & x64 versions)
- Browser:** Internet Explorer 8 (or above); Firefox or Google Chrome
- Processor:** 200MHz Pentium III processor or better (1.6GHz recommended).
- Memory:** 512Mb (1024Mb recommended for Vista).
- Hard Disk Space:** At least 30Mb available hard disk space (120Mb recommended).
- Monitor:** Minimum 256 colours, resolution 800 x 600 (15" Monitor with 16 bit colour, 800 x 600 resolution or greater recommended).

The recommended options should give the user ample performance to run other applications such as MS Excel, Word etc at the same time as Tinytag Explorer.

Software License

Tinytag Explorer is supplied under a site licence which means that it can be installed on as many computers as the customer wishes at a given location (additional copies of the software are required for each additional site the software is used at).

To view the full software licence, please visit our web site here:

<http://www.tinytag.info/info/tinytag-explorer-license-agreement>

Approvals

Gemini Data Loggers (UK) Ltd. operates a Business Management System which conforms to ISO 9001 and ISO 14001.